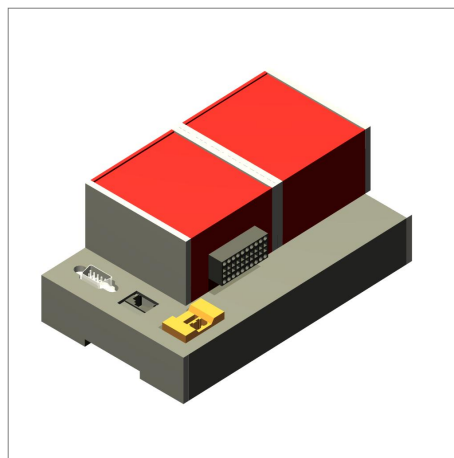


Accessories

vicosys® & pictor® Process module

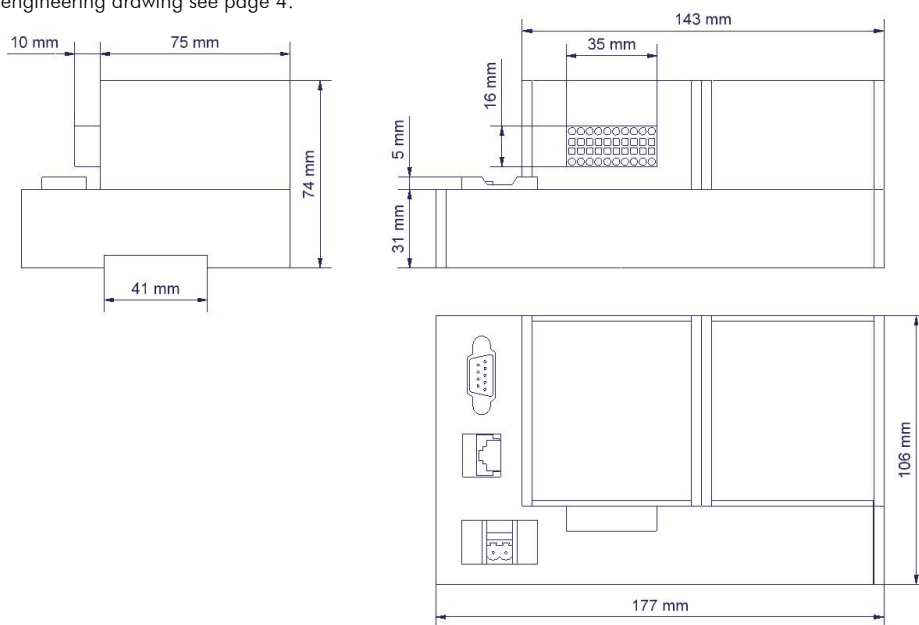
Product features

- Extension of the digital I/O's and communication over industrial fieldbus for vicosys® and pictor®
- Data exchange between machine vision system and process over digital I/O's or binding Profibus DP
- Simple installation and handling
- Short-circuit-proof wide-range input for operating voltage
- Industrial housing
- Robust mechanical design
- Top-hat mounting
- Electrically isolates, short-circuit proof
- Dialogue-based handling with vcwin®



Engineering drawing

Further engineering drawing see page 4.



Download
Manual



Download
CAD-File

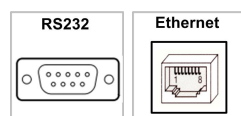


Definition

There are three different versions of process module. It is differentiated between I/O extension module and 2 Profibus module. The PKM-PLC8 stands for the extension of the I/O's. This covers 8 digital inputs und 8 digital outputs.

The process module for Profibus DP are divided into 2 devices. The PKM-PB works with smart camera pictor® and also with multi camera system vicosys®. However the PKM PB/v is exclusively applicable to vicosys®.

Variants



Accessories

vicosys® & pictor® Process module

Technical data

Model	PKM-PB 3-90-026	PKM-PB/v 3-90-027	PKM-PLC8 3-90-025
Number of inputs	8x32 bits (integral values)	1x16 bits, 7x32 bits (integral values)	8 pieces, +9 up to +36 VDC PLC voltage, galvanically isolated, debounce time 10 ms, from +8 VDC well-define High Signal, under +5 VDC well-define Low Signal
Number of outputs	30x32 bits (integral values)	1x16 bits, 29x32 bits (integral values)	8 pieces, short circuit protected, output voltage +9 up to +36 VDC, from +8 VDC well-define High Signal, under +5 VDC well-define Low Signal
Interfaces	RS232, Ethernet, Profibus DPV1	RS232, Profibus DPV1	RS232, Ethernet
Communication with PLC	Profibus DP (1.5 Mbit/s)	Profibus DP (1.5 Mbit/s)	-
Profibus connection	Profibus DP slave address25 (default), changeable	Profibus DP slave address 25 (default), changeable	-
Operating voltage	+ 9VDC to + 36 VDC non-stabilised, false polarity protected	+ 9 VDC to + 36 VDC non-stabilised, false polarity protected	+ 9VDC to + 36 VDC non-stabilised, false polarity protected
Power consumption	3.6 watts, 150 mA at 24 VDC	3.6 watts, 150 mA at 24 VDC	3.6 watts, 150 mA at 24 VDC
Response time	approx. 20 - 40 ms (command-dependent)	approx. 20 - 40 ms (command-dependent)	approx. 20 - 40 ms (command-dependent)
Dimensions	177 x 74 x 106 mm ³ (W x H x D)	108 x 74 x 106 mm ³ (W x H x D)	172 x 74 x 106 mm ³ (W x H x D)
Weight	approx. 650 g	approx. 340 g	650 g
Weight	approx. 650 g	approx. 340 g	approx. 650 g

Variants

Variants	PKM-PLC8	PKM-PB	PKM-PB/v
Order number	3-90-025	3-90-026	3-90-027

Accessories

vicosys® & pictor®

Process module

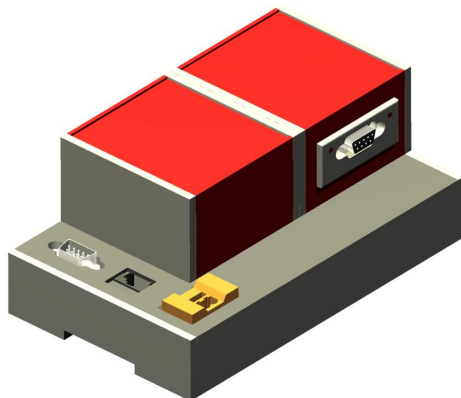
Notes

Scope of delivery

Process modul
Null modem cable
Customer CD with instruction manual

Model variations

PKM-PB



PKM-PB/v

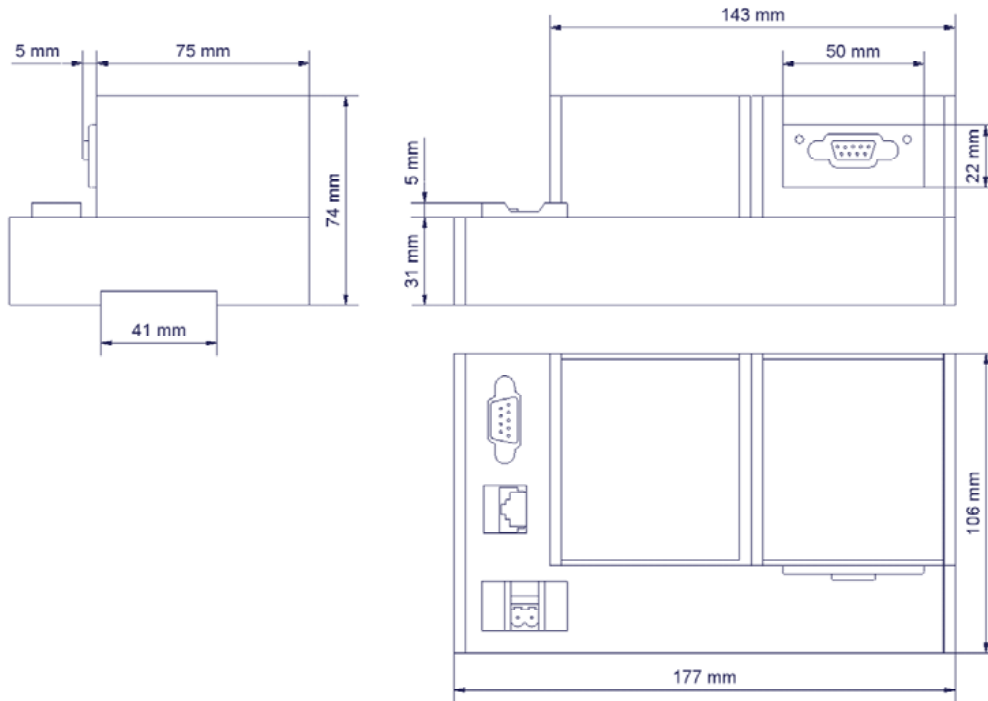


Accessories

vicosys[®] & pictor[®] Process module

Engineering Drawing

PKM-PB



PKM-PB/v

